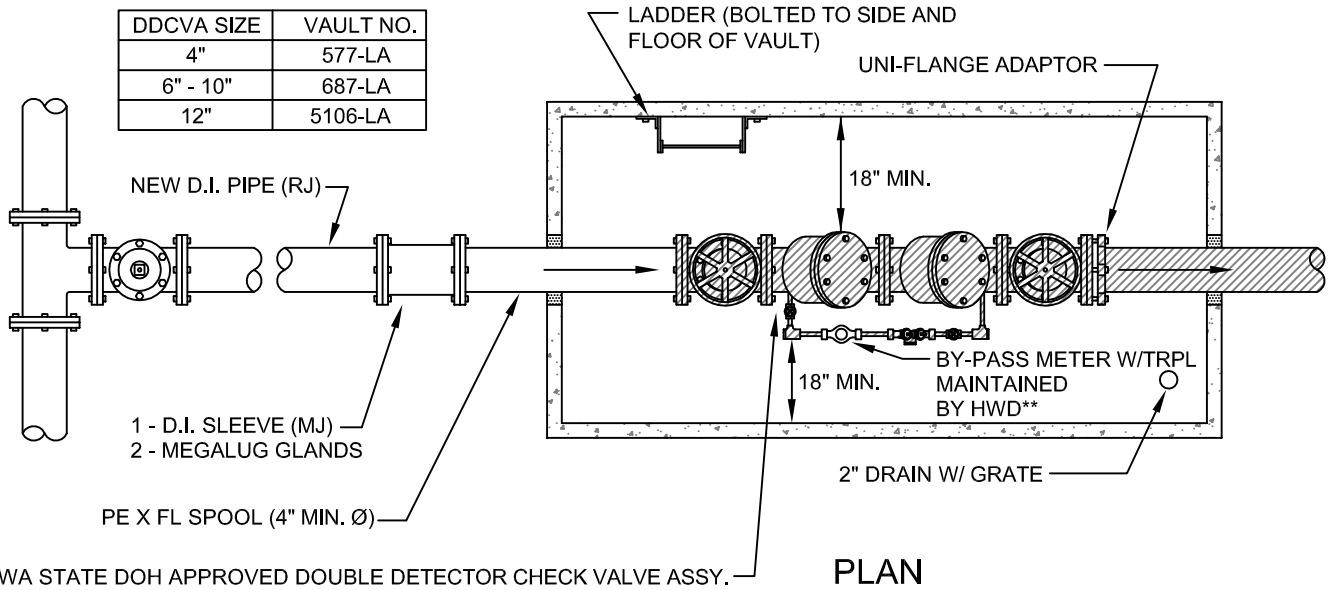


CONCRETE VAULT SHALL BE EQUIPPED W/BILCO STYLE LID. SEE HIGHLINE WATER DISTRICT STANDARD DETAIL #32.

DDCVA SIZE	VAULT NO.
4"	577-LA
6" - 10"	687-LA
12"	5106-LA



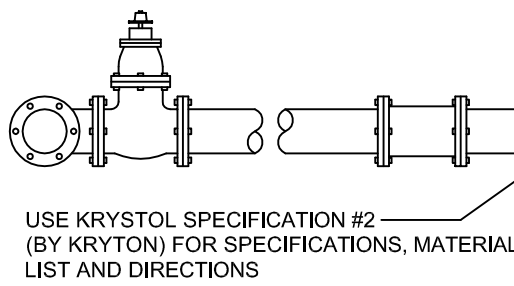
WA STATE DOH APPROVED DOUBLE DETECTOR CHECK VALVE ASSY.

**PLAN**

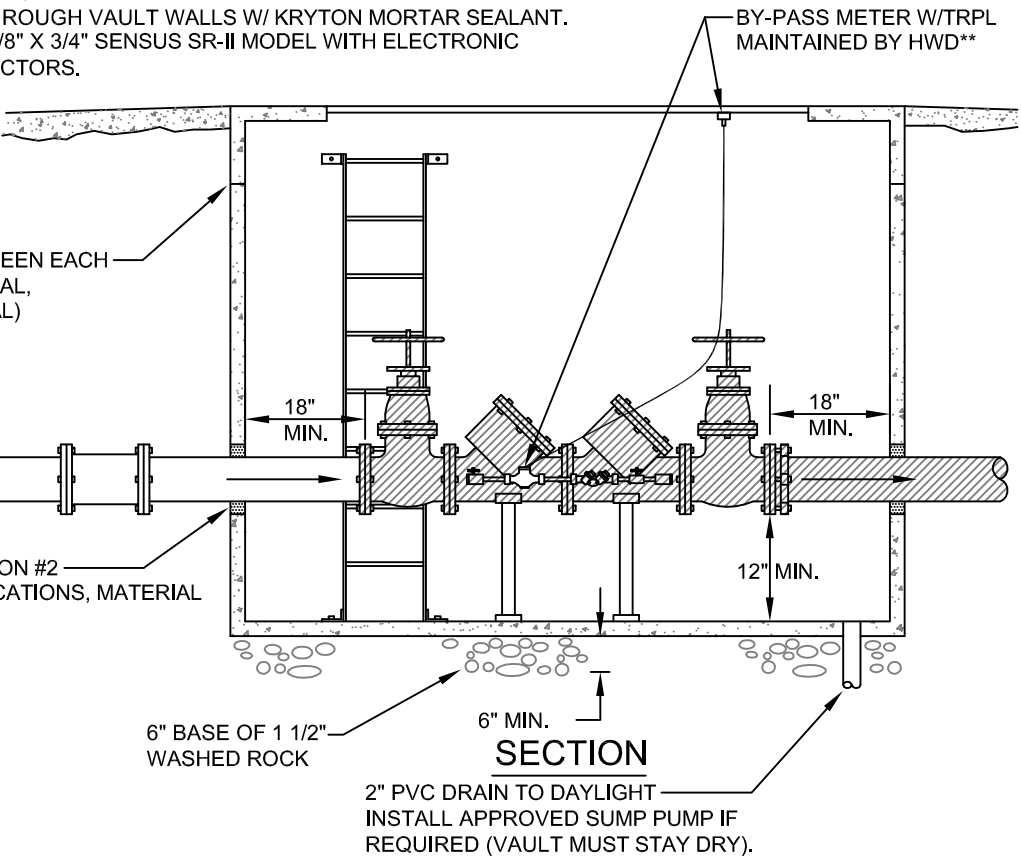
COVER SHALL NOT EXTEND MORE THAN 6" ABOVE GRADE WHEN VAULT IS NOT IN TRAFFIC AREA  
 SLOPE PAVEMENT AWAY FROM COVER WHEN VAULT IS IN TRAFFIC AREA.  
 INSTALL LOCKING VALVE BOX LID ON VALVE CONTROLLING SUPPLY LINE TO DDCVA'S.  
 INSTALL VALVE MARKER POST PER HWD DETAIL #10.  
 VAULT SHALL BE OF ADEQUATE HEIGHT TO PROVIDE MIN. 6" CLEARANCE TO O,S&Y VALVE WHEN VALVE IS FULLY OPEN.  
 INSTALL ALARM SYSTEM AS REQUIRED BY FIRE DISTRICT.  
 WATERPROOF PIPE ENTRY THROUGH VAULT WALLS W/ KRYTON MORTAR SEALANT.  
 \*\*BY-PASS METER SHALL BE 5/8" X 3/4" SENSUS SR-II MODEL WITH ELECTRONIC REGISTER & PLUG-IN CONNECTORS.



INSTALL JOINT SEALANT BETWEEN EACH VAULT SECTION (USE KENT-SEAL, RAM-NEK OR APPROVED EQUAL)



USE KRYSTOL SPECIFICATION #2 (BY KRYTON) FOR SPECIFICATIONS, MATERIAL LIST AND DIRECTIONS



**SECTION**

2" PVC DRAIN TO DAYLIGHT  
 INSTALL APPROVED SUMP PUMP IF REQUIRED (VAULT MUST STAY DRY).

\* MINIMUM SIZED VAULT

**DOUBLE DETECTOR CHECK AND VAULT**

NTS



REVISION DATE 7/10/08	DRAWN SED	CHECKED TDK	DISTRICT APPROVED TDK
PLOTTING SCALE NTS	FILE NAME F:\DWGS\DETAILS-2004\HWD-016	DATE APPROVED 7/10/08	