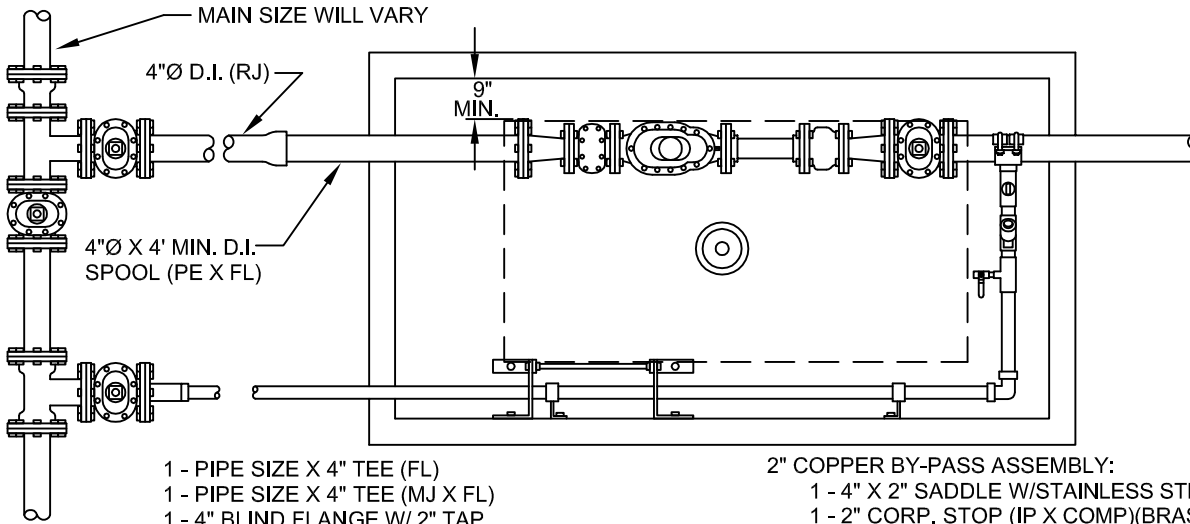


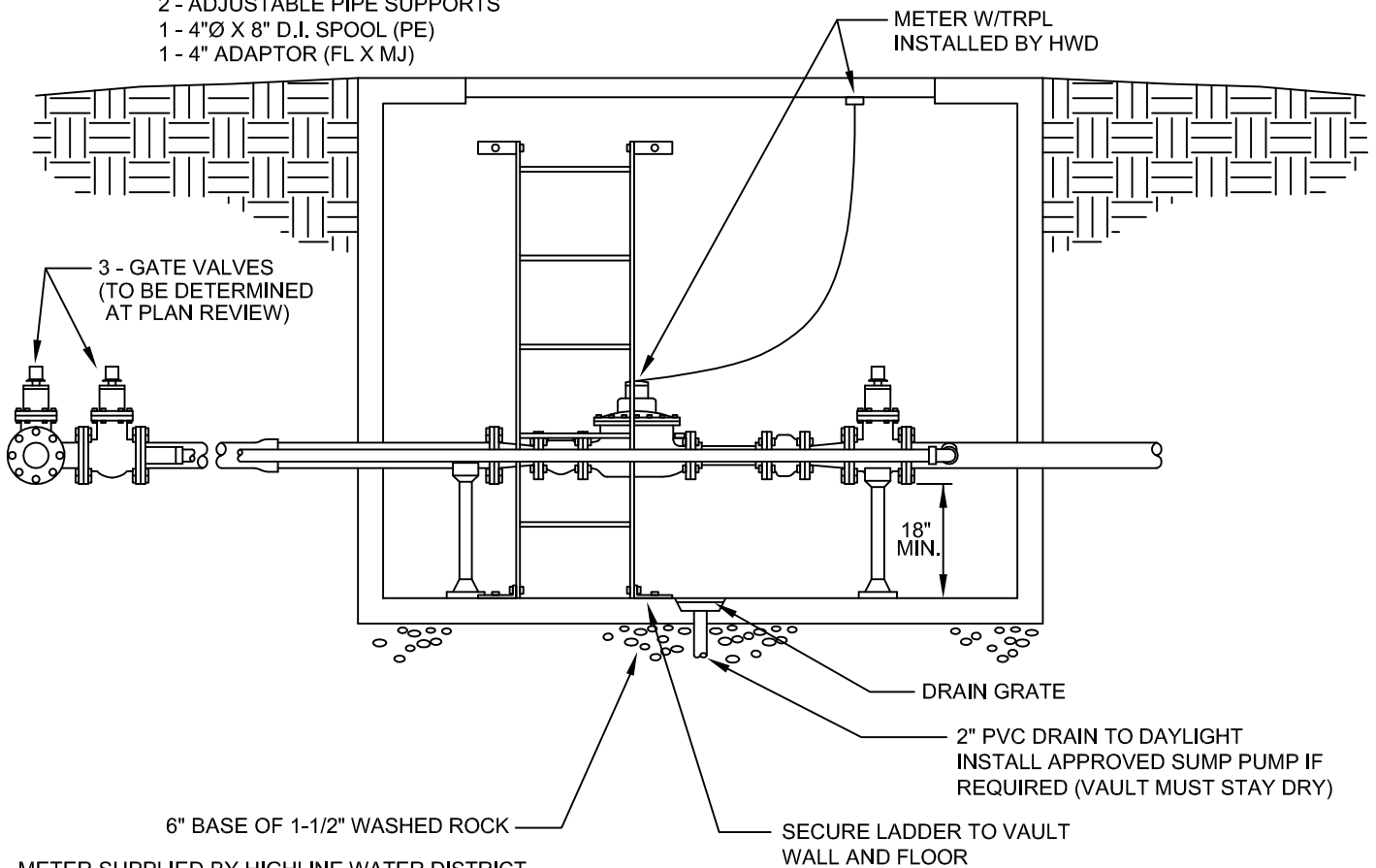
1 - CONCRETE VAULT (4484-LA) W/LADDER & BILCO STYLE LID (SEE STANDARD DETAIL #32).



- 1 - PIPE SIZE X 4" TEE (FL)
- 1 - PIPE SIZE X 4" TEE (MJ X FL)
- 1 - 4" BLIND FLANGE W/ 2" TAP
- 3 - 4" GATE VALVES (FL X MJ)
- 1 - 4" D.I. SPOOL (PE)
- 6 - 4" MEGALUG GLANDS
- 2 - 4" X 3" REDUCERS (FL)
- 1 - 4" GATE VALVE (FL)
- 1 - 3" BRONZE BASKET STRAINER (FL)
- 1 - 3" ROCKWELL COMPOUND METER (FL) W/TRPL
- 1 - 3" X 12" SPOOL
- 2 - 3" UNI-FLANGES
- 1 - 3" SILENT CHECK VALVE (GLOBE STYLE)(FL)
- 2 - ADJUSTABLE PIPE SUPPORTS
- 1 - 4" X 8" D.I. SPOOL (PE)
- 1 - 4" ADAPTOR (FL X MJ)

2" COPPER BY-PASS ASSEMBLY:

- 1 - 4" X 2" SADDLE W/STAINLESS STL STRAPS
- 1 - 2" CORP. STOP (IP X COMP)(BRASS)
- 1 - 2" ADAPTOR (IP X COMP)(BRASS)
- 1 - 2" 90° BEND (IP)(BRASS)
- 1 - 2" CHECK VALVE (IP)(BRASS)
- 1 - 2" X 3/4" TEE (IP)(BRASS)
- 1 - 3/4" BALL VALVE (IP)(BRASS)
- 2" HARD COPPER PIPE (LENGTH TBD)
- 3 - BRASS NIPPLES (LENGTH AS NEEDED)
- MISC. 2" ADAPTORS (BRASS)
- SECURE COPPER PIPE TO VAULT



METER SUPPLIED BY HIGHLINE WATER DISTRICT.  
DEVELOPER TO MAKE APPLICATION FOR METER WITH HWD.

\*\* RETROFIT MAY VARY

**NEW 3" METER INSTALLATION**  
NTS



REVISION DATE 7/10/08	DRAWN SED	CHECKED TDK	DISTRICT APPROVED TDK
PLOTTING SCALE NTS	FILE NAME F:\DWGS\DETAILS-2004\HWD-023	DATE APPROVED 7/10/08	